

Configurari Stocuri Clienti Online

IIS 7.5

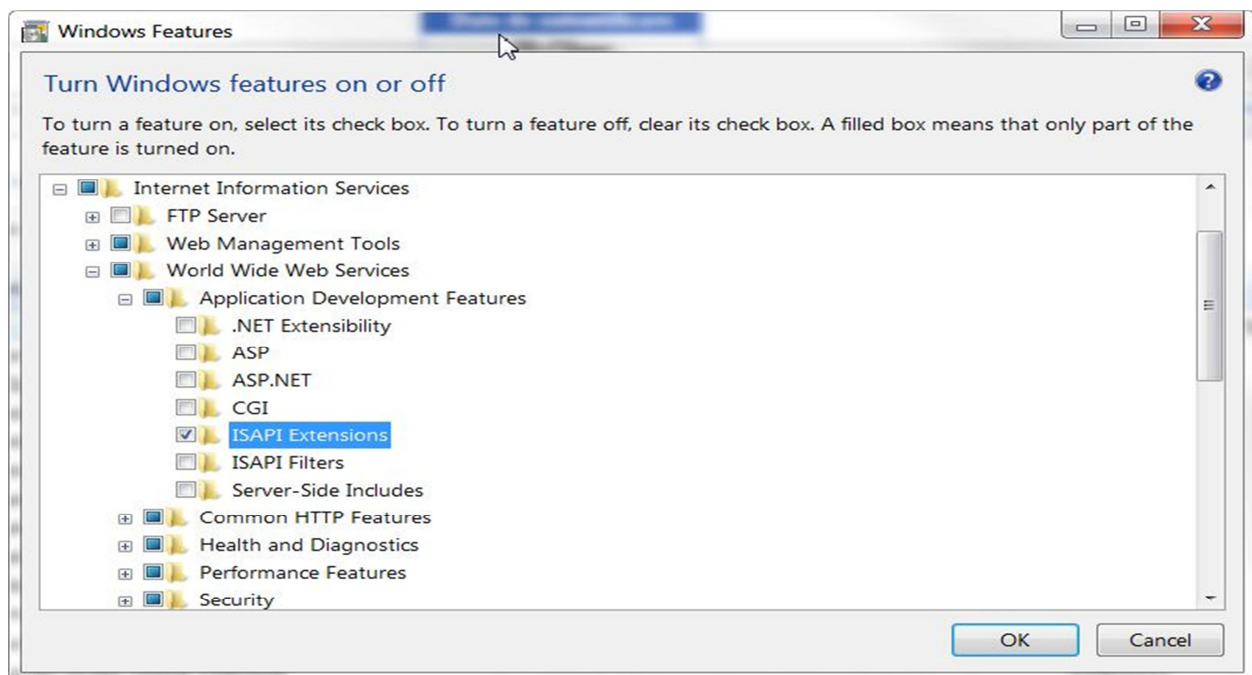
(Win7/2008 x64/x86)

v.1.0

Instalare IIS

Din "Control Panel" -> "Program and Features" -> "Turn Windows Features On/Off"

Instalati IIS pe calculatorul dorit, puteti lasa selectia default pentru "World Wide Web Services" dar asigurativa ca ati bifat ISAPI Extensions din "Application development Feature"



Fisierele pentru modulul online de pe ftp

Downloadati fisierele de pe <ftp://ftp2.winmentor.ro/WinMentor/Tools/StocuriClientiOnline/>

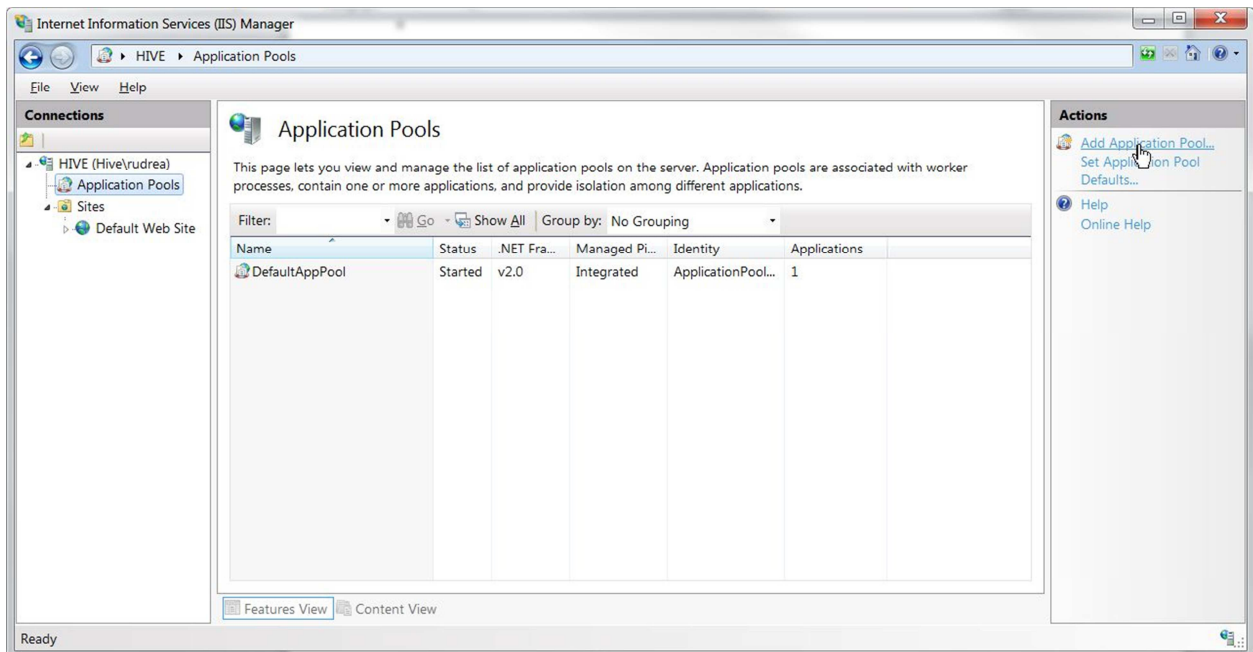
In directorul c:\inetpub\wwwroot\mentor\

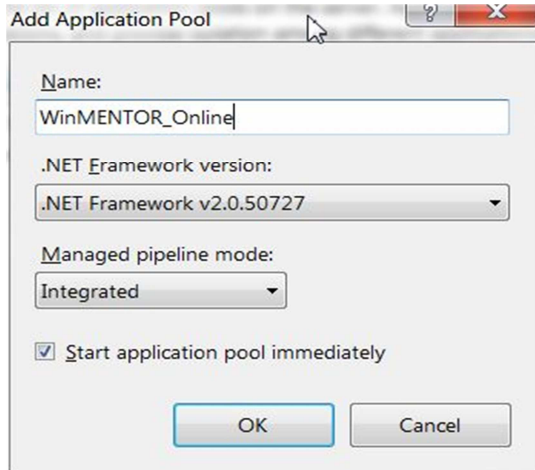
Ultimul director (mentor) nu exista, creati-l dumneavoastra.

Configurare IIS

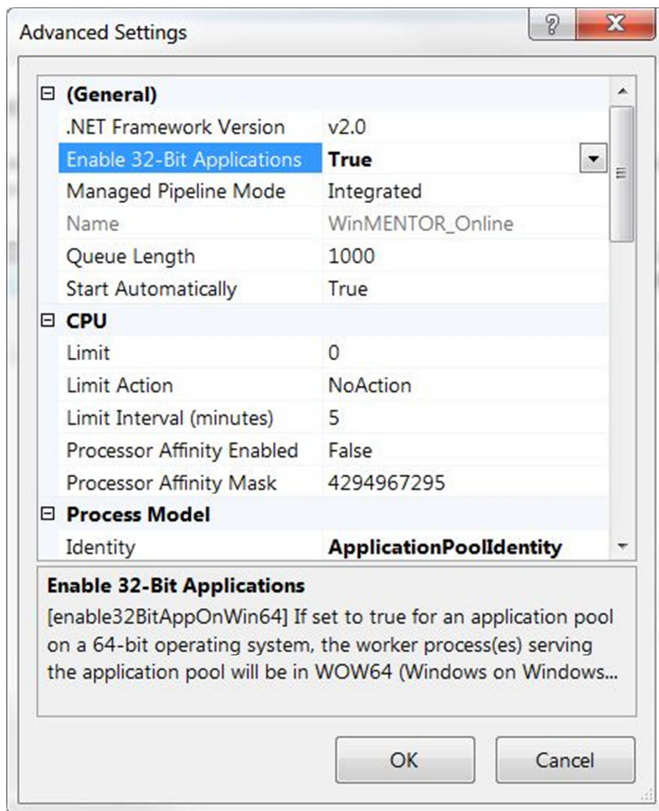
Deschideti tool-ul de configurare IIS din "Control Panel" -> "Administrative Tools" -> "Internet Information Services (IIS) Manager"

"Application Pool" pentru modulul online.





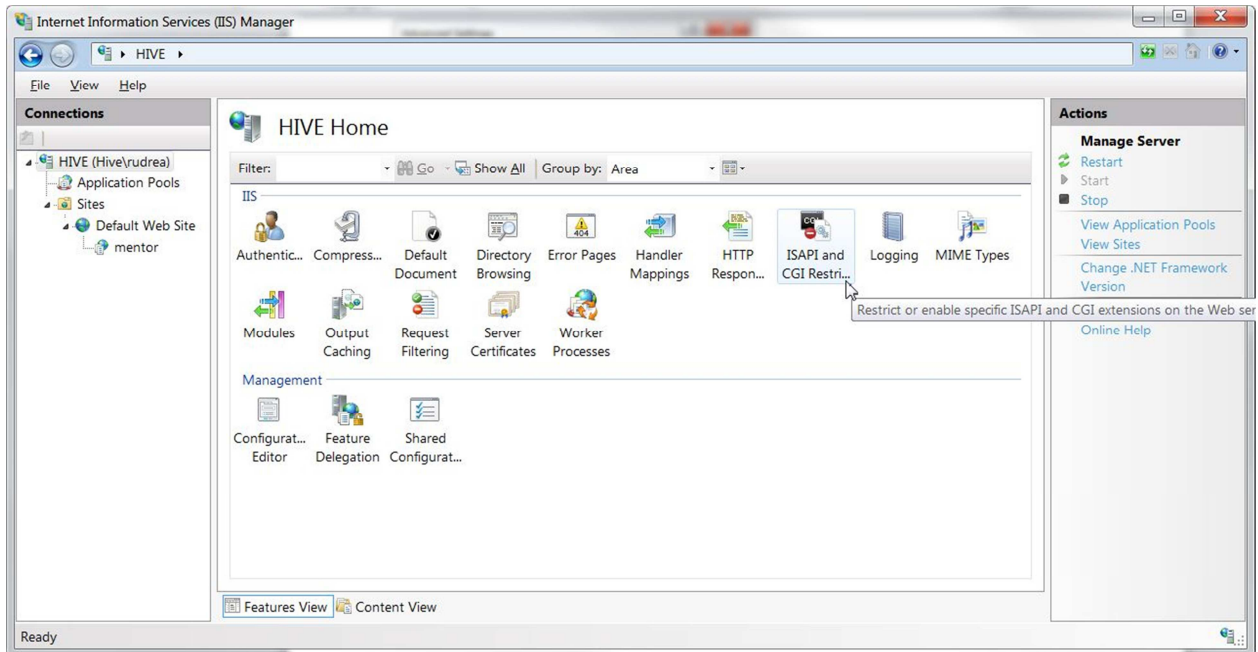
Dupa care click dreapta pe "WinMENTOR_Online" Advanced Settings si asigurativa ca "Enable 32-bit Application" este setat pe "True"



Configurarea ISAPI

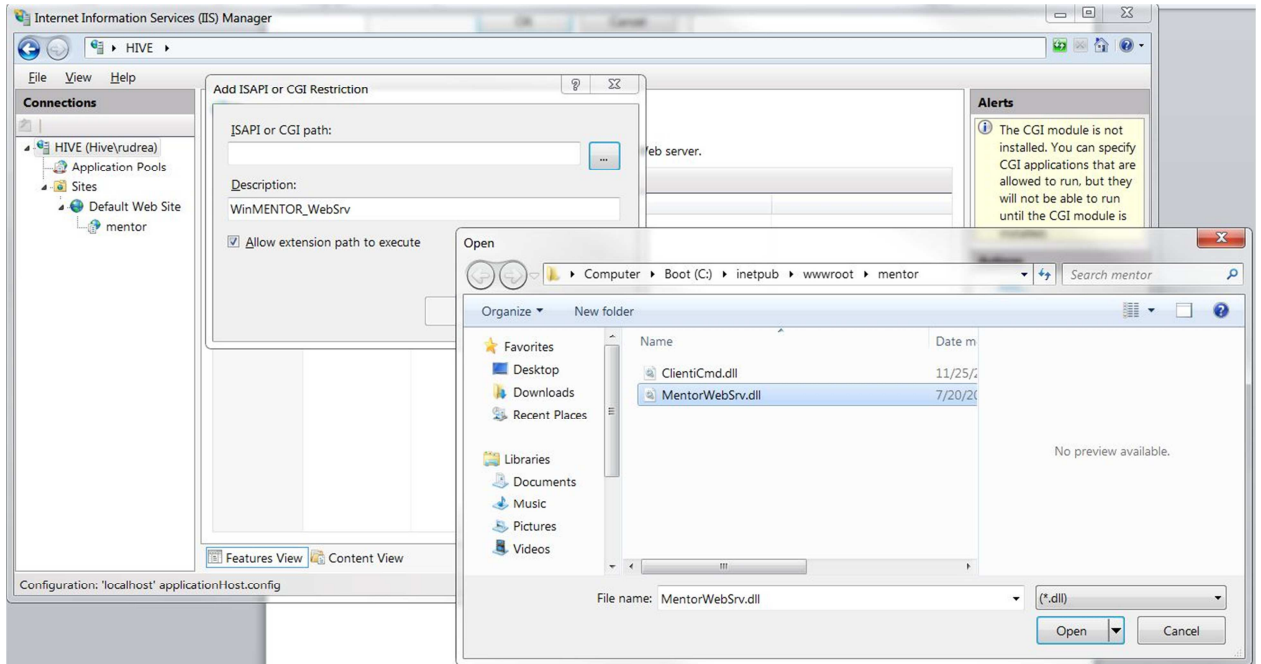
Acum va trebui sa permiteti celor doua fisiere .dll din modulul online sa se execute.

Click pe cel mai de sus nod din panoul "Connections" in cazul exemplului "HIVE (Hive\rudrea)" si selectati "ISAPI and CGI Restrictions" din panoul de mijloc.

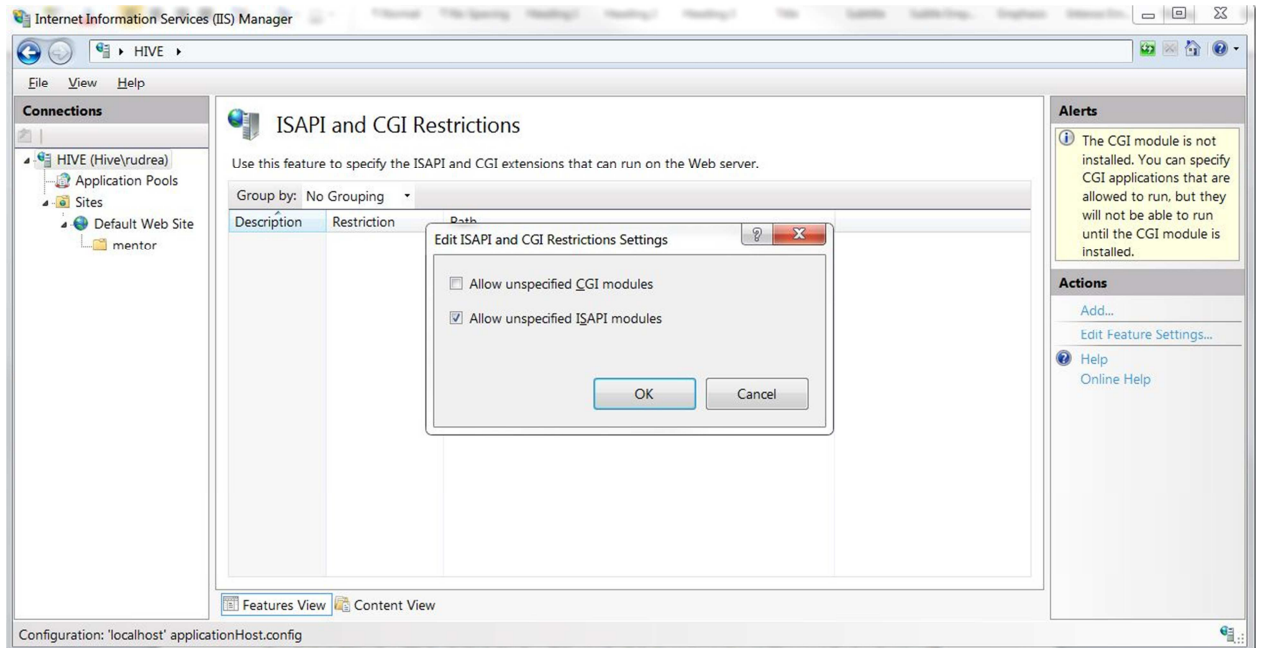


Aci aveti 2 posibilitati, fie definiti fiecare dll in parte sau dati access la orice dll sa se execute.

- pentru fiecare dll in parte
Click din panoul "Actions" pe "Add", completati o descriere generic si alegeti calea catre cele 2 dll-uri din c:\inetpub\wwwroot\mentor

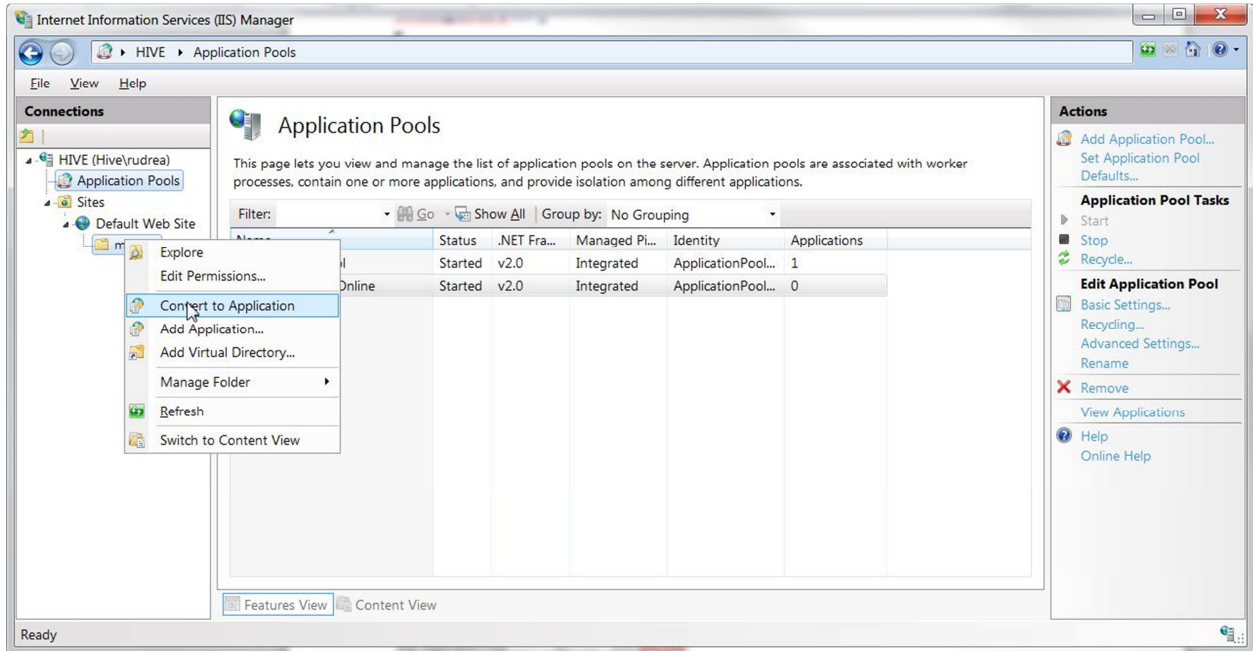


- pentru orice dll
Click din panoul "Actions" pe "Edit Feature Settings" si bifati "Allow unspecified ISAPI modules"

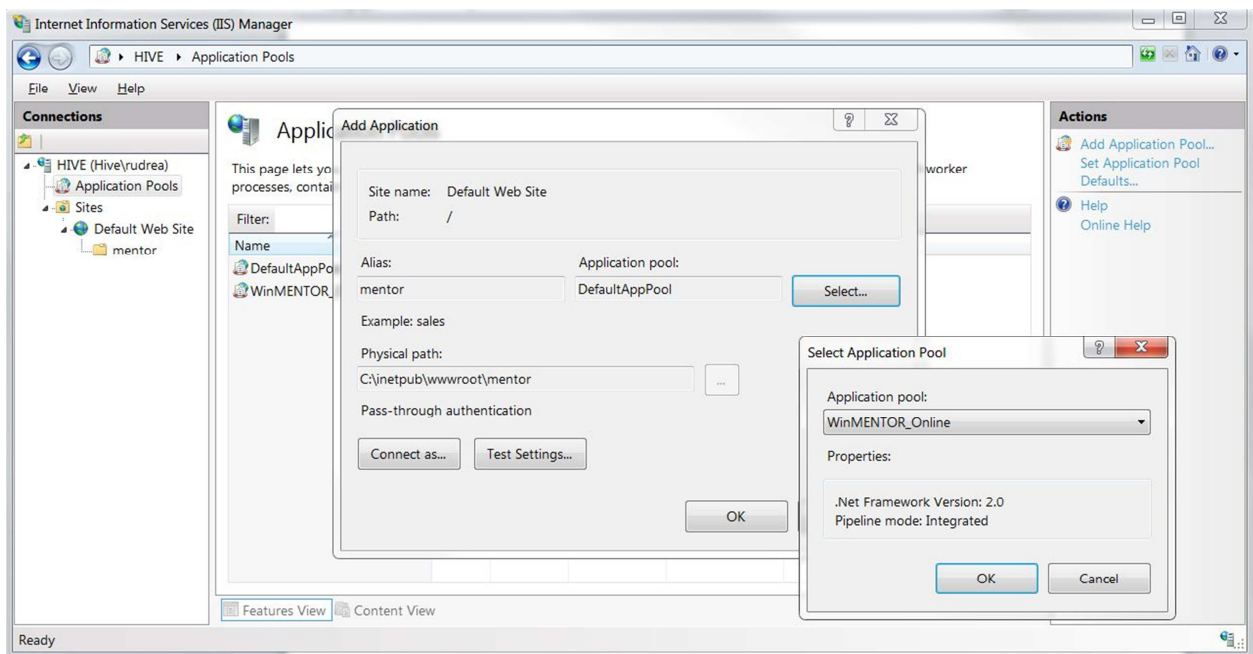


Setarea modulului comenzi online

Deschideti "Sites" -> "Default Web Site" -> "Mentor", click dreapta si alegeti "Convert To Application"

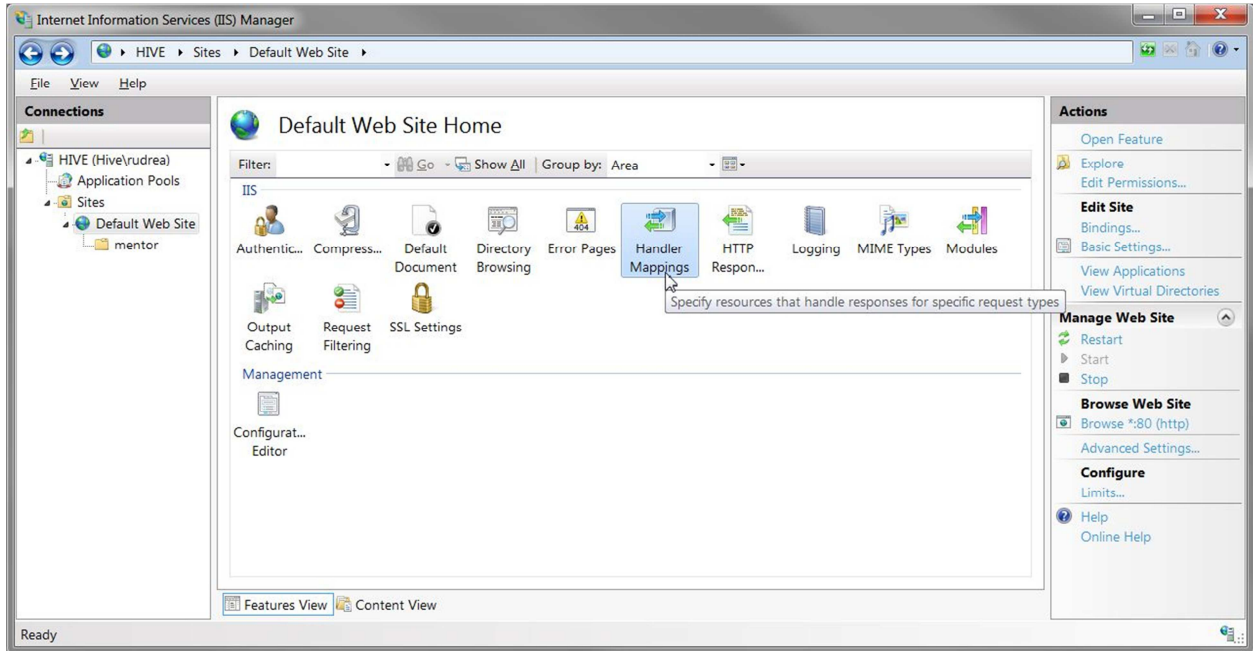


Click "Select" si selectati aplicatia nou creata "WinMENTOR_Online" ca tip de baza al modulului.

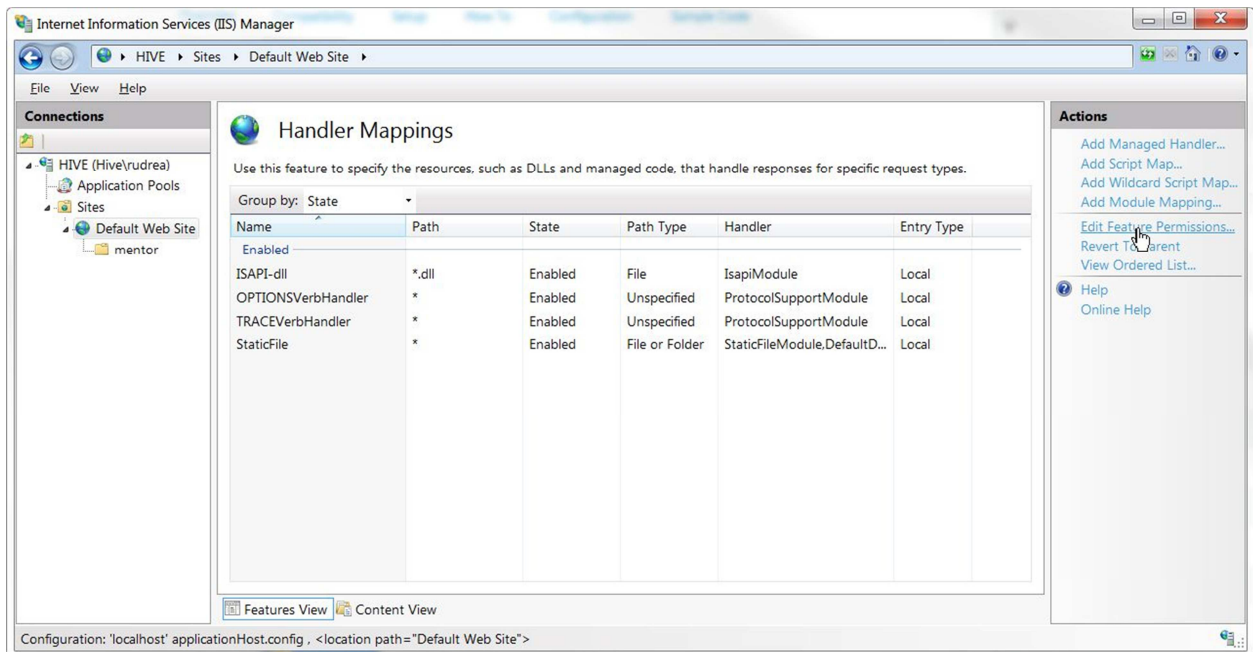


Handler Mappings configuration

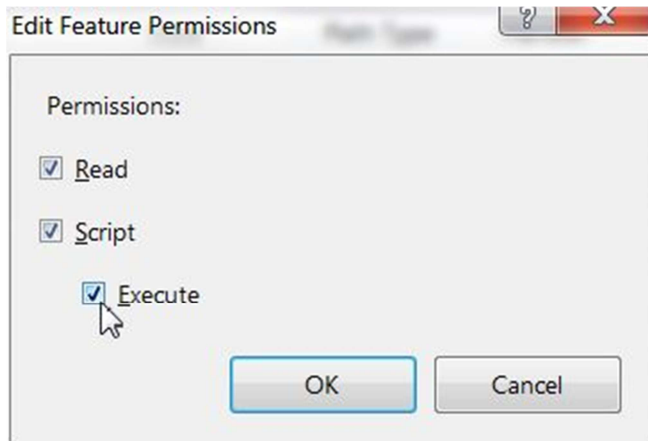
Click pe mentor -> "Handler Mappings"



Dupa care din panoul "Actions" din dreapta alegeti "Edit feature permissions"



Bifati "Execute"



In acest moment ar trebui sa vedeti listat "ISAPI-dll" ca handler "Enabled"

Accesarea modulului

Deschideti orice browser aveti si acesati urmatorul url:

<http://localhost/mentor/MentorWebSrv.dll>

sau

<http://localhost/mentor/ClientiCmd.dll>